

DO NOT SCALE FROM THIS PRINT

DESIGNED & DIMENSIONED IN INCHES[MILLIMETERS]

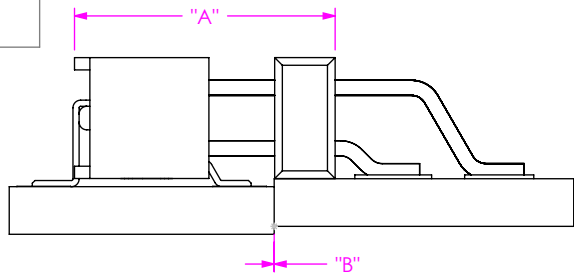


FIG 1  
MMS-02-DH MATED WITH MMT-DH

		TABLE 1					
		MMS-02-DH				WIPE	
MMT-DH LEAD STYLE		"A" FULLY MATED	"A" MAX	"B" FULLY MATED	"B" MAX	FULLY MATED	MIN
	-01		N/A	N/A	N/A	N/A	N/A
-02		.339 [8.61]	.344 [8.74]	.000 [0.00]	.005 [0.13]	.020 [0.51]	.015 [0.38]

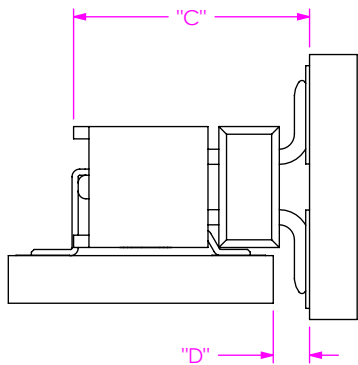


FIG 2  
MMS-02-DH MATED WITH MMT-DV

		TABLE 2					
		MMS-02-DH				WIPE	
MMT-DV LEAD STYLE		"C" FULLY MATED	"C" MAX	"D" FULLY MATED	"D" MAX	FULLY MATED	MIN
	-01		.307 [7.80]	.335 [8.50]	.047 [1.19]	.075 [1.89]	.043 [1.08]

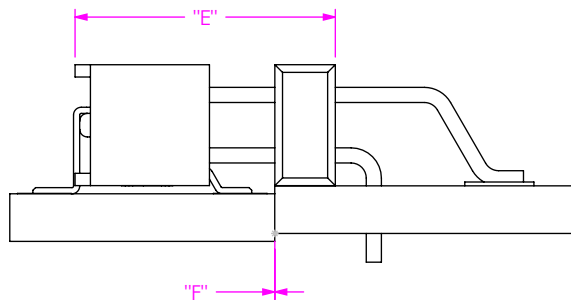


FIG 3  
MMS-02-DH MATED WITH MMT-MT

		TABLE 3					
		MMS-02-DH				WIPE	
MMT-DH LEAD STYLE		"E" FULLY MATED	"E" MAX	"F" FULLY MATED	"F" MAX	FULLY MATED	MIN
	-01		N/A	N/A	N/A	N/A	N/A
-02		.339 [8.61]	.345 [8.76]	.000 [0.00]	.006 [0.15]	.021 [0.53]	.015 [0.38]

NOTES:

1. ALL DIMENSIONS BASED ON NOMINAL VALUES FOR SAMTEC RECOMMENDED PCB LAYOUTS.
2. ALTHOUGH MAX DIMENSION ARE LISTED SAMTEC RECOMMENDS FULLY MATING COMPONENTS.

**PROPRIETARY NOTE**  
THIS DOCUMENT CONTAINS CONFIDENTIAL AND PROPRIETARY INFORMATION AND ALL DESIGN, MANUFACTURING, REPRODUCTION, USE, PATENT RIGHTS AND SALES RIGHTS ARE EXPRESSLY RESERVED BY SAMTEC, INC. THIS DOCUMENT SHALL NOT BE DISCLOSED, IN WHOLE OR PART, TO ANY UNAUTHORIZED PERSON OR ENTITY NOR REPRODUCED, TRANSFERRED OR INCORPORATED IN ANY OTHER PROJECT IN ANY MANNER WITHOUT THE EXPRESS WRITTEN CONSENT OF SAMTEC, INC.



520 PARK EAST BLVD, NEW ALBANY, IN 47150  
PHONE: 812-944-6733 FAX: 812-948-5047  
e-Mail: info@SAMTEC.com code: 55322

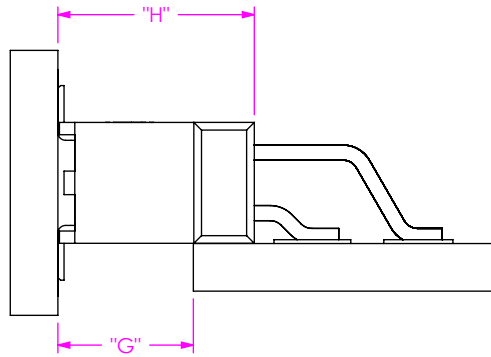


FIG 4  
MMS-02-DV MATED WITH MMT-DH

		TABLE 4				WIPE	
		MMS-02-DV				FULLY MATED	MIN
MMT-DH LEAD STYLE		"G" FULLY MATED	"G" MAX	"H" FULLY MATED	"H" MAX		
	-01		.176 [4.47]	.218 [5.54]	.256 [6.50]	.298 [7.57]	.057 [1.45]
-02		.225 [5.72]	.316 [8.03]	.305 [7.75]	.396 [10.06]	.106 [2.69]	.015 [0.38]

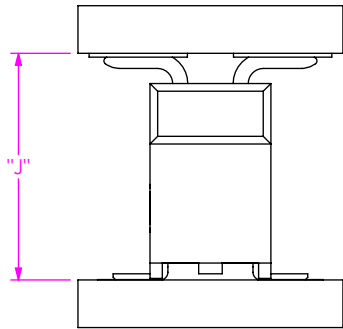


FIG 5  
MMS-02-DV MATED WITH MMT-DV

		TABLE 5			
		MMS-02-DV		WIPE	
MMT-DV LEAD STYLE		"J" FULLY MATED	"J" MAX	FULLY MATED	MIN
	-01		.295 [7.49]	.337 [8.55]	.057 [1.44]

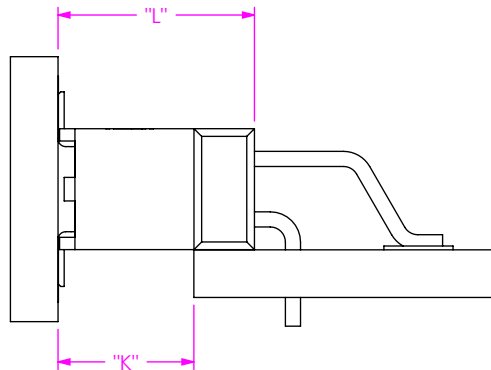


FIG 6  
MMS-02-DV MATED WITH MMT-MT

		TABLE 6				WIPE	
		MMS-02-DV				FULLY MATED	MIN
MMT-MT LEAD STYLE		"K" FULLY MATED	"K" MAX	"L" FULLY MATED	"L" MAX		
	-01		.177 [4.50]	.219 [5.55]	.256 [6.50]	.298 [7.56]	.057 [1.44]
-02		.226 [5.74]	.317 [8.04]	.305 [7.75]	.396 [10.05]	.106 [2.68]	.015 [0.38]

PROPRIETARY NOTE  
 THIS DOCUMENT CONTAINS CONFIDENTIAL AND PROPRIETARY INFORMATION AND ALL DESIGN, MANUFACTURING, REPRODUCTION, USE, PATENT RIGHTS AND SALES RIGHTS ARE EXPRESSLY RESERVED BY SAMTEC, INC. THIS DOCUMENT SHALL NOT BE DISCLOSED, IN WHOLE OR PART, TO ANY UNAUTHORIZED PERSON OR ENTITY NOR REPRODUCED, TRANSFERRED OR INCORPORATED IN ANY OTHER PROJECT IN ANY MANNER WITHOUT THE EXPRESS WRITTEN CONSENT OF SAMTEC, INC.



520 PARK EAST BLVD, NEW ALBANY, IN 47150  
 PHONE: 812-944-6733 FAX: 812-948-5047  
 e-Mail: info@SAMTEC.com code: 55322

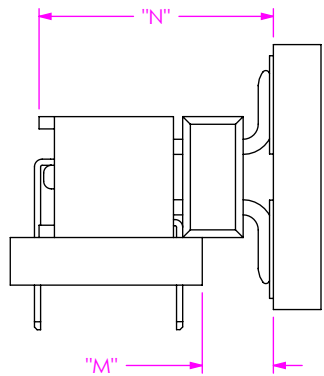


FIG 7  
MMS-01-DH MATED WITH MMT-DV

		TABLE 7					
		MMS-01-DH				WIPE	
		"M" FULLY MATED	"M" MAX	"N" FULLY MATED	"N" MAX	FULLY MATED	MIN
MMT-DV LEAD STYLE	-01	.093 [2.36]	.123 [3.12]	.305 [7.75]	.335 [8.50]	.045 [1.14]	.015 [0.38]
	-02	.142 [3.61]	.221 [5.61]	.354 [8.99]	.433 [10.99]	.094 [2.38]	.015 [0.38]

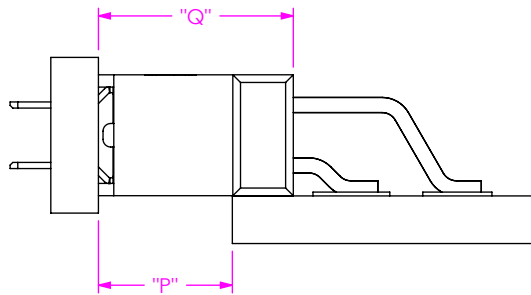


FIG 8  
MMS-01-DV MATED WITH MMT-DH

		TABLE 8					
		MMS-01-DV				WIPE	
		"P" FULLY MATED	"P" MAX	"Q" FULLY MATED	"Q" MAX	FULLY MATED	MIN
MMT-DH LEAD STYLE	-01	.174 [4.42]	.216 [5.48]	.254 [6.45]	.296 [7.51]	.057 [1.44]	.015 [0.38]
	-02	.223 [5.66]	.314 [7.97]	.303 [7.70]	.394 [10.00]	.106 [2.68]	.015 [0.38]

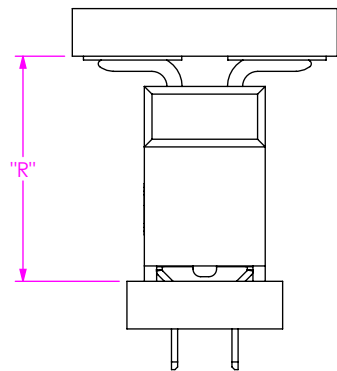


FIG 9  
MMS-01-DV MATED WITH MMT-DV

		TABLE 9			
		MMS-01-DV		WIPE	
		"R" FULLY MATED	"R" MAX	FULLY MATED	MIN
MMT-DV LEAD STYLE	-01	.293 [7.44]	.334 [8.48]	.056 [1.41]	.015 [0.38]

• PROPRIETARY NOTE •  
THIS DOCUMENT CONTAINS CONFIDENTIAL AND PROPRIETARY INFORMATION AND ALL DESIGN, MANUFACTURING, REPRODUCTION, USE, PATENT RIGHTS AND SALES RIGHTS ARE EXPRESSLY RESERVED BY SAMTEC, INC. THIS DOCUMENT SHALL NOT BE DISCLOSED, IN WHOLE OR PART, TO ANY UNAUTHORIZED PERSON OR ENTITY NOR REPRODUCED, TRANSFERRED OR INCORPORATED IN ANY OTHER PROJECT IN ANY MANNER WITHOUT THE EXPRESS WRITTEN CONSENT OF SAMTEC, INC.



520 PARK EAST BLVD, NEW ALBANY, IN 47150  
PHONE: 812-944-6733 FAX: 812-948-5047  
e-Mail: info@SAMTEC.com code: 55322

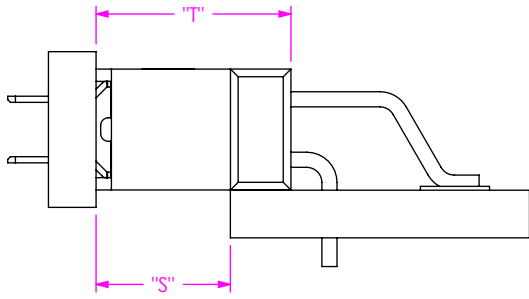


FIG 10  
MMS-01-DV MATED WITH MMT-MT

		TABLE 10					
		MMS-01-DV				WIPE	
		"S" FULLY MATED	"S" MAX	"T" FULLY MATED	"T" MAX	FULLY MATED	MIN
MMT-MT LEAD STYLE	-01	.175 [4.45]	.217 [5.50]	.254 [6.44]	.295 [7.50]	.057 [1.44]	.015 [0.38]
	-02	.224 [5.69]	.315 [7.99]	.303 [7.69]	.393 [9.99]	.106 [2.68]	.015 [0.38]

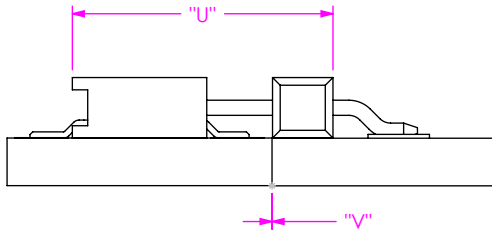


FIG 11  
MMS-02-SH MATED WITH MMT-SH

		TABLE 11					
		MMS-02-SH				WIPE	
		"U" FULLY MATED	"U" MAX	"V" FULLY MATED	"V" MAX	FULLY MATED	MIN
MMT-SH LEAD STYLE	-01	N/A	N/A	N/A	N/A	N/A	N/A
	-02	.339 [8.61]	.344 [8.74]	.000 [0.00]	.005 [0.13]	.020 [0.51]	.015 [0.38]

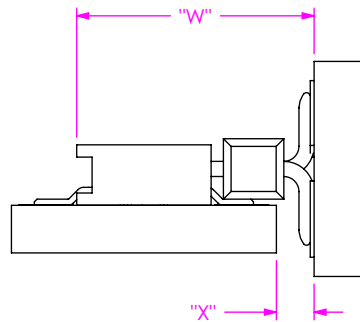


FIG 12  
MMS-02-SH MATED WITH MMT-SV

		TABLE 12					
		MMS-02-SH				WIPE	
		"W" FULLY MATED	"W" MAX	"X" FULLY MATED	"X" MAX	FULLY MATED	MIN
MMT-SV LEAD STYLE	-01	.309 [7.85]	.335 [8.51]	.049 [1.24]	.075 [1.91]	.041 [1.04]	.015 [0.38]
	-02	.358 [9.09]	.433 [11.00]	.098 [2.49]	.173 [4.39]	.090 [2.29]	.015 [0.38]

PROPRIETARY NOTE  
THIS DOCUMENT CONTAINS CONFIDENTIAL AND PROPRIETARY INFORMATION AND ALL DESIGN, MANUFACTURING, REPRODUCTION, USE, PATENT RIGHTS AND SALES RIGHTS ARE EXPRESSLY RESERVED BY SAMTEC, INC. THIS DOCUMENT SHALL NOT BE DISCLOSED, IN WHOLE OR PART, TO ANY UNAUTHORIZED PERSON OR ENTITY NOR REPRODUCED, TRANSFERRED OR INCORPORATED IN ANY OTHER PROJECT IN ANY MANNER WITHOUT THE EXPRESS WRITTEN CONSENT OF SAMTEC, INC.



520 PARK EAST BLVD, NEW ALBANY, IN 47150  
PHONE: 812-944-6733 FAX: 812-948-5047  
e-Mail: info@SAMTEC.com code: 55322

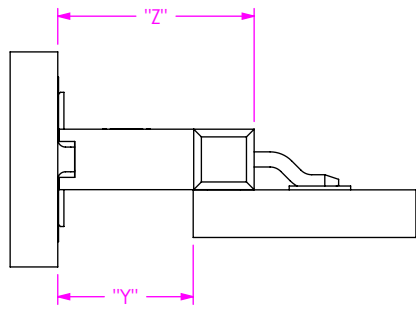


FIG 13  
MMS-02-SV MATED WITH MMT-SH

		TABLE 13				WIPE	
		MMS-02-SV					
		"Y" FULLY MATED	"Y" MAX	"Z" FULLY MATED	"Z" MAX	FULLY MATED	MIN
MMT-SH LEAD STYLE	-01	.176 [4.47]	.218 [5.53]	.256 [6.50]	.298 [7.56]	.057 [1.44]	.015 [0.38]
	-02	.225 [5.72]	.316 [8.02]	.305 [7.75]	.396 [10.05]	.106 [2.68]	.015 [0.38]

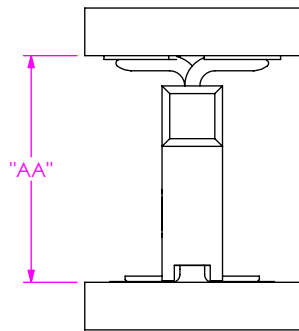


FIG 14  
MMS-02-SV MATED WITH MMT-SV

		TABLE 14			
		MMS-02-SV		WIPE	
		"AA" FULLY MATED	"AA" MAX	FULLY MATED	MIN
MMT-SV LEAD STYLE	-01	.295 [7.49]	.337 [8.56]	.057 [1.45]	.015 [0.38]
	-02	.344 [8.74]	.435 [11.05]	.106 [2.69]	.015 [0.38]

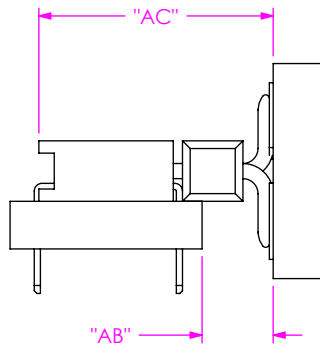


FIG 15  
MMS-01-SH MATED WITH MMT-SV

		TABLE 15				WIPE	
		MMS-01-SH					
		"AB" FULLY MATED	"AB" MAX	"AC" FULLY MATED	"AC" MAX	FULLY MATED	MIN
MMT-SV LEAD STYLE	-01	.093 [2.36]	.123 [3.12]	.305 [7.75]	.335 [8.51]	.045 [1.14]	.015 [0.38]
	-02	.142 [3.61]	.221 [5.61]	.354 [8.99]	.433 [11.00]	.094 [2.39]	.015 [0.38]

PROPRIETARY NOTE  
THIS DOCUMENT CONTAINS CONFIDENTIAL AND PROPRIETARY INFORMATION AND ALL DESIGN, MANUFACTURING, REPRODUCTION, USE, PATENT RIGHTS AND SALES RIGHTS ARE EXPRESSLY RESERVED BY SAMTEC, INC. THIS DOCUMENT SHALL NOT BE DISCLOSED, IN WHOLE OR PART, TO ANY UNAUTHORIZED PERSON OR ENTITY NOR REPRODUCED, TRANSFERRED OR INCORPORATED IN ANY OTHER PROJECT IN ANY MANNER WITHOUT THE EXPRESS WRITTEN CONSENT OF SAMTEC, INC.



520 PARK EAST BLVD, NEW ALBANY, IN 47150  
PHONE: 812-944-6733 FAX: 812-948-5047  
e-Mail: info@SAMTEC.com code: 55322

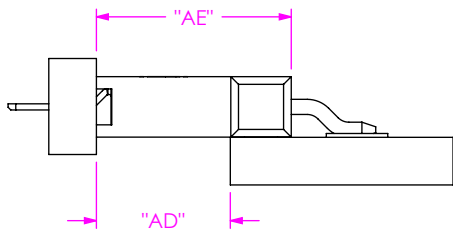


FIG 16  
MMS-01-SV MATED WITH MMT-SH

		TABLE 16					
		MMS-01-SV			WIPE		
		"AD" FULLY MATED	"AD" MAX	"AE" FULLY MATED	"AE" MAX	FULLY MATED	MIN
MMT-SH LEAD STYLE	-01	.174 [4.42]	.215 [5.46]	.254 [6.44]	.295 [7.49]	.056 [1.42]	.015 [0.38]
	-02	.223 [5.66]	.313 [7.95]	.303 [7.69]	.393 [9.97]	.105 [2.67]	.015 [0.38]

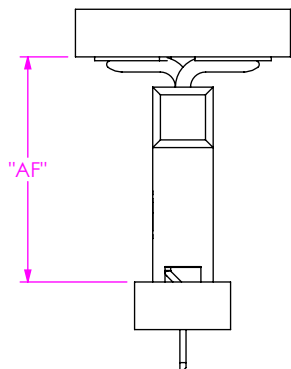


FIG 17  
MMS-01-SV MATED WITH MMT-SV

		TABLE 17			
		MMS-02-SV		WIPE	
		"AF" FULLY MATED	"AF" MAX	FULLY MATED	MIN
MMT-SV LEAD STYLE	-01	.254 [6.45]	.295 [7.49]	.056 [1.42]	.015 [0.38]
	-02	.303 [7.70]	.393 [9.98]	.105 [2.67]	.015 [0.38]

• PROPRIETARY NOTE •  
THIS DOCUMENT CONTAINS CONFIDENTIAL AND PROPRIETARY INFORMATION AND ALL DESIGN, MANUFACTURING, REPRODUCTION, USE, PATENT RIGHTS AND SALES RIGHTS ARE EXPRESSLY RESERVED BY SAMTEC, INC. THIS DOCUMENT SHALL NOT BE DISCLOSED, IN WHOLE OR PART, TO ANY UNAUTHORIZED PERSON OR ENTITY NOR REPRODUCED, TRANSFERRED OR INCORPORATED IN ANY OTHER PROJECT IN ANY MANNER WITHOUT THE EXPRESS WRITTEN CONSENT OF SAMTEC, INC.



520 PARK EAST BLVD, NEW ALBANY, IN 47150  
PHONE: 812-944-6733 FAX: 812-948-5047  
e-Mail: info@SAMTEC.com code: 55322

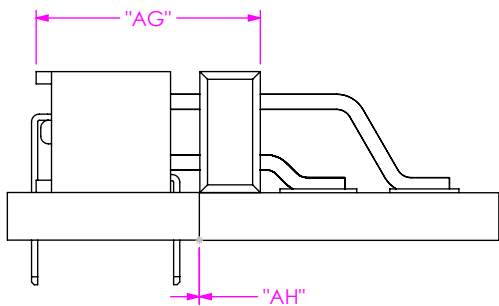


FIG 18  
MMS-01-DH MATED WITH MMT-DH

		TABLE 18					
		MMS-01-DH				WIPE	
		"AG" FULLY MATED	"AG" MAX	"AH" FULLY MATED	"AH" MAX	FULLY MATED	MIN
<b>MMT-DH LEAD STYLE</b>	-01	.292 [7.42]	.297 [7.54]	.000 [0.00]	.005 [0.13]	.020 [0.51]	.015 [0.38]
	-02	.292 [7.42]	.345 [8.76]	.000 [0.00]	.053 [1.35]	.068 [1.73]	.015 [0.38]

**PROPRIETARY NOTE**  
 THIS DOCUMENT CONTAINS CONFIDENTIAL AND PROPRIETARY INFORMATION AND ALL DESIGN, MANUFACTURING, REPRODUCTION, USE, PATENT RIGHTS AND SALES RIGHTS ARE EXPRESSLY RESERVED BY SAMTEC, INC. THIS DOCUMENT SHALL NOT BE DISCLOSED, IN WHOLE OR PART, TO ANY UNAUTHORIZED PERSON OR ENTITY NOR REPRODUCED, TRANSFERRED OR INCORPORATED IN ANY OTHER PROJECT IN ANY MANNER WITHOUT THE EXPRESS WRITTEN CONSENT OF SAMTEC, INC.



520 PARK EAST BLVD, NEW ALBANY, IN 47150  
 PHONE: 812-944-6733 FAX: 812-948-5047  
 e-Mail: info@SAMTEC.com code: 55322